

**SensiT™** - $\beta$ -Lactam Plus

SensiT™ - $\beta$ -Lactam Plus is a lateral flow immunoassay that allows you to rapidly detect the presence of  $\beta$ -lactam antibiotics including cefalexin in a milk sample.



## Introduction

SensiT™ - $\beta$ -Lactam Plus strip test kit is a competitive receptor-binding assay which relies on the specific interaction between receptors and  $\beta$ -lactam residues. It rapidly detects the presence of most commonly used  $\beta$ -lactam antibiotics including cefalexin in a milk sample. Each test is devised to require only two major components: a microwell and a dipstick. The microwell contains predetermined amounts of receptors conjugated to colloidal gold particles for visual labeling. The results are easily interpreted and can be obtained within a short span of six minutes on the test strip.

- ✔ Easy to use
- ✔ Accurate & reliable results
- ✔ Presumptive ID. for the presence of cefalexin



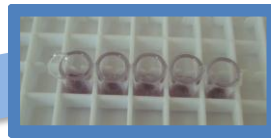
**Imgen BioSciences, Inc.**

**151 Martine Street, Fall River, MA 02723, USA**

**Phone: +1 (781) 850-2047**

2. Place microwells on a plastic tray

1. Set heater at 40 ° C



3. Add 200 µl of milk and mix well with reagents

# Test Procedures

Wait for 3 minutes



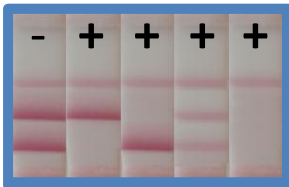
4. Place the microwells on the heater

Wait for 3 minutes



5. Insert test strips

6. Interpret results



## SensiT™ -β-Lactam Plus Strip Test Kit Detects a Panel of β-lactam Antibiotics in Cow Milk

### Detection Limits

Compound (MRL-ppb)		Detection Limit ppb (µg/L)
Penicillins	Penicillin-G (4)	2-3
	Ampicillin (4)	3-4
	Amoxicillin (4)	3-4
	Oxacillin (30)	12-18
	Cloxacillin (30)	6-8
	Dicloxacillin (30)	6-8
	Nafcillin (30)	30-50
Cefalosporins	Cefacetrile (125)	30-40
	Cefalexin (100)	75-100
	Cefalonium (20)	3-5
	Cefazolin (50)	20-22
	Cefoperazone (50)	3-4
	Cefquinome (20)	20-30
	Cetiofur (100)	12-16
	Cephapirin (60)	6-8

### Result Interpretation

Legend:  
 C = control  
 T = test  
 CFLX = cefalexin

Valid: Shows all three lines (C, T, CFLX) present.  
 Invalid: Shows only the control line (C) present.  
 Negative: Shows only the test line (T) present.  
 Positive: Shows both the test line (T) and the cefalexin line (CFLX) present.

Cat. No.	Product Name
STBL-020	SensiT™ β-Lactam Plus strip test kit (96 tests)
DBH-110	Dry block heater